



Benign Prostate Hyperplasia (BPH) & Prostate Artery Embolisation (PAE)

**A minimally invasive, non-surgical
treatment for the most common
medical condition in men.**

www.urocaremarbella.com

An enlarged prostate is one of the most common diagnoses in men.

When was the last time you slept all night without one single interruption?

An enlarged prostate gland compresses the urethra. This causes partial, or sometimes complete obstruction, leading to the following symptoms:

Constant and urgent need to urinate

Incontinence

Increased frequency of urination at night

Frequent urine infections

Bleeding

Need for a constant bladder catheter

Dribbling at the end of urination

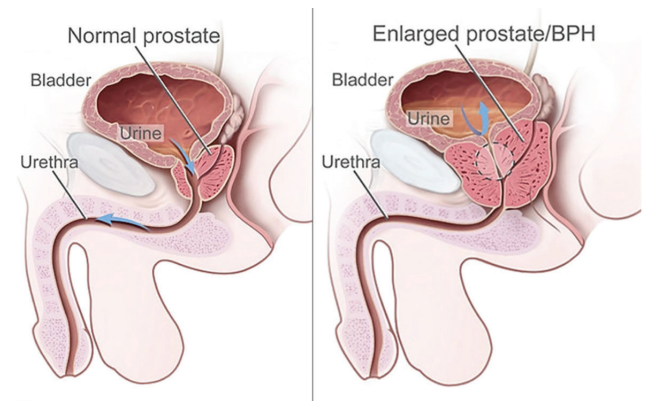
Some report erectile dysfunction



Prostate Artery Embolisation - PAE

Sexually and socially active men, have been hoping for a treatment that preserves the full functionality of their uro-genital system, which is exactly what Prostate Artery Embolization (PAE) offers.

Not everybody suffers, but those who do are longing for a solution that works without damaging the uro-genital system.



PAE - A minimally invasive, non-surgical, endovascular procedure.

The vascular system is accessed through the artery in your wrist. In some cases, access through the femoral artery in the groin is indicated.

No anesthesia or sedation is necessary, because a needle prick is the maximum pain you will feel. From there, the PAE specialist will navigate to your prostate arteries using highly specialised thin catheters and wires.

After all catheters are removed, we will place a pressure bandage over the access puncture and monitor you for 3 to 4 hours before letting you go home.

Advantages of PAE

- PAE is an endovascular procedure that doesn't require complex wound care, just a simple dressing
- PAE does not require anesthesia
- PAE is not surgery. There is no risk of post-surgical infections, blood loss or other complications
- PAE does not require a post-intervention bladder catheter
- PAE is an outpatient procedure, so you will go home the same day
- PAE is a minimally invasive procedure. It does not touch the prostate or any of its adjacent tissues, so there are no urinary side effects:
 - No incontinence
 - No retrograde ejaculation
 - No impotence

Too good to be true?

- Scientifically proven to be effective in clinical studies for more than 15 years, the procedure shows outstanding long term results
- FDA approved in the US as a standard BPH treatment procedure
- Recommended by European guidelines for BPH treatment, as cited by CIRSE (Cardiovascular and Interventional Society of Europe)
- Endorsed by numerous happy patients - or rather "ex-patients"

"Very simply put: It changed my life!"

(Ion Margaritescu)

UroCare

PAE: A minimally invasive, non-surgical procedure:

No cut - No wound - No scar

What makes UroCare special?

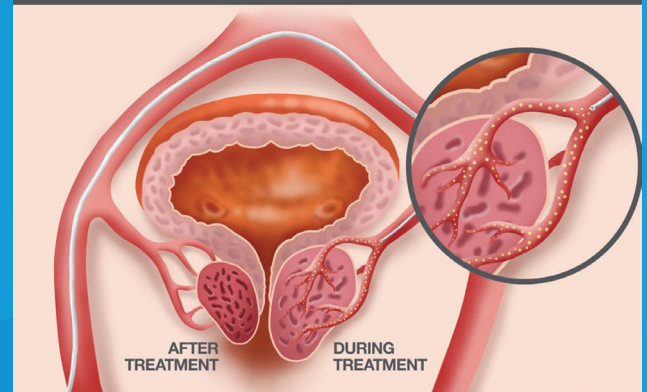
We believe in High Tech!

Our ability to use specialised navigation software developed by our trusted technology partner Siemens, makes our procedure more accurate and easier to perform.

Our integrated Cone Beam-CT provides precise 3D-imaging of your vascular anatomy, enabling us to determine with precision the optimal spot for releasing the embolisation material of small beads that permanently block the prostate arteries.

It may take a few weeks to feel the full effect of the PAE, since the prostate shrinks gradually over time, and the genito-urinary anatomy also needs time to adjust.

EMBOLISATION TREATMENT



If you have BPH and are interested in the PAE procedure, please schedule an appointment with our team to ask any questions you have about the procedure, including its benefits and any risks involved. You can contact us by phone or email. We hope this will help you make an educated decision about your treatment plan.

Call for an appointment: **(+34) 677 759 003**

E-mail for an appointment or more information:

info@cardiocaremarbella.com



Pre-procedural evaluation and tests may be needed. Our team will take you through the detailed pre-procedure evaluation step by step, alongside our urologists and our radiology team.

Dr. Jose M. Rodriguez Mesa *(left)*
**Specialist in interventional radiology /
PAE and his supporting team**

www.urocaremarbella.com